



AIR COMPRESSOR & DRILLING RIG



Guangxi Liugong Machinery Co., Ltd.
Liugong(Liuzhou)compressor Co.,Ltd.

Address: 46 Baifan Road, Liuzhou,
Guangxi
Sales service hotline: 0772-5330818
Fax: 0772-5330809
Postal code: 545007



Due to continuous product improvements, the latest technical parameters are subject to no notice. Please consult Liugong (Liuzhou) Compressor Co., Ltd.

版本号: LGYSJ-2025V1


TOUGH WORLD.TOUGH EQUIPMENT.

THE TEAM AND THE MACHINE YOU CAN TRUST.

Liugong (Liuzhou) Compressor Co., Ltd. (hereinafter referred to as Liugong Compressor) is controlled by Guangxi Liugong Machinery Co., Ltd., formerly known as Liuzhou Compressor General Factory. Adhering to the historical accumulation of Liuzhou Compressor Factory and relying on the strong strength of Liugong Group, Liugong Compressor is committed to becoming a world-class expert in gas compression technology systems. Liugong Compressor has rich industry experience and can provide you with suitable compressors and drilling equipment. Our equipment is energy-saving, efficient, stable and reliable, and has been widely favored by domestic and foreign customers.

We insist on customer centricity, and you can trust our sales team and product experts to provide you with perfect equipment, maintenance support, and financial solutions to fully meet your operational needs.

Coverage range of air compressor model spectrum:	Free Air Delivery	Pressure	Low and high temperature applications
	5~46.5 m³/min	8~40 bar	-40℃~60℃




Complete product spectrum

Products cover screw compressors and drilling rigs




Reliable product quality

Strong R&D strength, strict factory inspection



Intimate after-sales service

We are always by your side



Generous historical accumulation

More than 65 years of Chinese brand, trustworthy

HISTORY

1958

Factory was established

In 1958, Liuzhou Machinery Repair Factory was established



1971

Innovation, self-improvement, forge ahead

2D12-100/8 was born, and Liukong entered the ranks of large and medium-sized compressor production.

1979

The output value is breaking through

The China Compressor industry Inspection team visited the factory for inspection, and the VY-9/7 air compressor and the 4L-20/8 air compressor were rated as first-class products.



1989

Revolution and innovation are emerging

Gas compressor series products won the Guangxi Science and Technology Progress Award in 1989

VY-9/7 and 4L-20/8 air compressors maintain national and ministerial standards

VY-9/7 compressor won the national silver award

2D12-100/8 air compressor won the famous brand product award of the Autonomous Region, Guangxi famous brand product



1993

Innovate, seek change, explore and move forward

In 1993, the output reached 1,573 units, and the product sales revenue reached 170 million yuan. The company entered the national second-class enterprise.

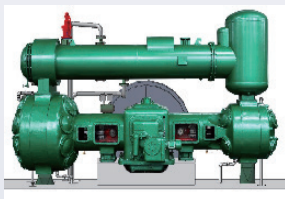


2007

Large oil-free compressor launched

In 2007, the development and trial production of DW-100/8 large oil-free compressor was completed, and it was put on the market that year.

The development of coal bed methane compressors was successfully carried out in 2008, and three orders of more than 10,000,000 were completed from 2008 to 2011.



2014

Innovation and development

Successfully developed a new generation of screw compressors



2022

Established Drilling Rig Research Institute

Start research and development of open-pit excavation products Build five core technical capabilities to fully cover products and services in the engineering field



1966

VY-9/7 air compressor was born

Successfully trial-produced circulating compressors and nitrogen-hydrogen compressors, and jointly designed Liukong's main product VY-9/7 air compressor with up pressure and tin pressure.



1984

Obtained the first license to fill the domestic gap

The factory obtained a compressor production license from the Ministry of Machinery Industry, becoming the first enterprise in the national compressor industry to obtain a compressor production license

The trial production of the 2D12-150/3.5 gas compressor was successful, filling the domestic gap. Since then, 80, 120, 200, 230, 60, 40, and 20 cubic meter gas compressors have been developed successively.



1990

Gas compressors are widely praised

From the late 1980s to the early 1990s, the market share of our coal compressor reached more than 85%.

In the 1990 Beijing Asian Games, Beijing Yanshan Gas Company used 12 200 cubic coal presses of our company to successfully complete the task of conveying coal, which was praised by the Beijing Municipal Government.

1995

The first company in Guangxi and the first in the industry to obtain ISO9001 certification

In 1995, it became the first company in Guangxi and the first company in the compressor industry to obtain the ISO9001 quality system certification registration certificate.



2013

Restructuring and development

On August 1, 2013, Liugong (Liuzhou) Compressor Co., Ltd. was established.



2016

Innovation and development

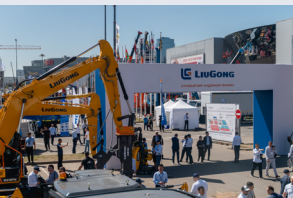
Reached a cooperation with VOLVO, a well-known engineering power company. In the same year, a high-pressure air compressor was launched, and it successfully entered the fields of water wells, geophysical exploration, and reef blasting.



2024

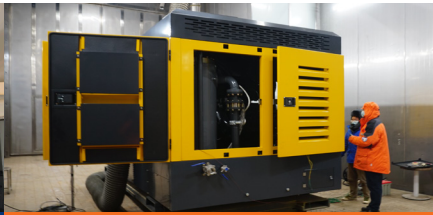
Overseas business growth obviously

Excellent results have been achieved in the exploration of international business, and foreign trade business will account for more than 50% in 2024.





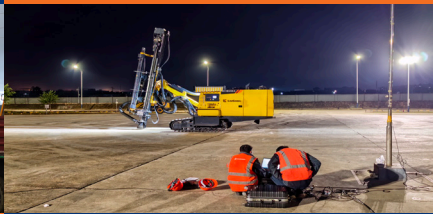
Center of gravity rollover test



Freezing test



Plateau test



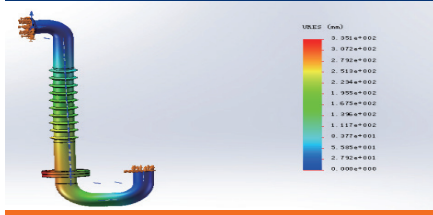
NVH



Flow test



Thermal balance test



Finite element analysis



Vibration test

Strong R&D strength

Liugong's Global R&D Center currently has 26 research institutes, science and technology innovation platforms, etc., providing comprehensive common technology and R&D platform support for various product line research institutes.

Liugong Compressor Research and Development belongs to Liugong Mining Machinery Research Institute, which is responsible for the research and development of Liugong compressor and drilling rig product lines, and has a dynamic and innovative R&D team.

It has a number of product testing capabilities, such as cold start test, flow test, temperature test, plateau test, tipping test, thermal balance test, wind speed test, oil return test, finite element analysis, atmospheric pressure and humidity test, electronic control calibration test, vibration test, exhaust pressure test, NVH test, power test, oil return test, etc.

Advanced product manufacturing system

We have rich experience in product design and manufacturing. Relying on the Product research Institute established by Liugong Global R&D Center, it is one of the major research institutes under Liugong Global R&D Center and has the qualification of an authoritative national energy efficiency Laboratory.

Liugong Compressor has a perfect production quality management system, advanced manufacturing equipment, testing methods and technology, and uses professionalism and enthusiasm to create high-quality products in compressors, drilling rigs and other industries for customers.

Five core technical capabilities



High power

Can achieve 588 kW installed power
45.5 m³/min 40 bar

It meets CE certification, is exported to many countries in Northern Europe, and is widely used in petroleum, deep wells, geophysical exploration and other national economic fields.



Challenge high altitude

Altitude: 5800 meters plateau
Temperature: -40°C

The plateau-type screw compressor independently developed by Liugong can be used worry-free in harsh environments with extreme cold and hypoxia.



Low temperature & high temperature applications

Cold application technology: -40°C
High temperature application technology: 60°C

With its unique thermal insulation technology and pre-heating technology, the low-temperature start-up performance of the compressor is guaranteed. With its unique hot and cold partition and independent air inlet technology, it ensures the use of the compressor in high temperature and extreme heat environments.



Smart butler

Energy-saving voltage regulation expert, intelligent control expert

The intelligent butler control system developed by Liugong Electronic Technology Research Institute has functions such as information display, report generation, fault inquiry, geographic location, trajectory, electronic fence, remote control, and credit control.



Multilingual & multi-condition

8 major languages in the world have been developed
3 operating conditions

Russian, Turkish, Arabic, Spanish, Portuguese, Thai, English, and French have been developed
3 types of operating conditions have been applied, including single working conditions, double working conditions, and three working conditions

Authorized patent

Relying on its unique patented technology, Liugong Compressor has successfully built five core technical capabilities to reduce costs and improve efficiency, and is committed to bringing customers a better user experience.

The utility model patent certificates won are: diesel mobile screw air compressor, cryogenic compressor, plateau compressor, one-key dual-machine compressor control system, compressor control system, ultra-low temperature diesel engine fuel system, single-screw compressor screw rotor alignment device, mobile compressor waterproof hood, etc.



Have you ever encountered these problems?

- Compressor energy consumption
- Compressor running status must be monitored on site
- Compressor maintenance requires in-person management
- Lacking tools for compressor fault management

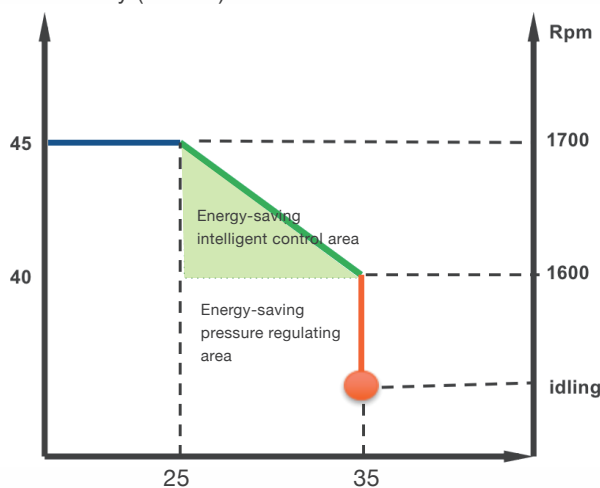


The technical developers at Liugong Compressor, through two years of R&D and testing, have customized an intelligent control system based on pre-sales and after-sales needs and experience. Liugong compressors are equipped with Liugong energy-saving intelligent controls and energy-saving pressure regulators, which were developed by the Liugong Electrical Research Institute.

The intelligent control system provides you with the following functions:

The intelligent control system enables dynamic air volume adjustments, intelligent pressure controls, and air volume adjustment based on needs, providing you with a better operation scheme, thereby reducing comprehensive fuel consumption by 10%-15%.

Free Air Delivery (m³/min)



System control logic diagram

Dynamic air volume adjustment: The system is able to quickly increase the air volume and improve the drilling speed during drill pipe inflation and slag discharge via the energy-saving controls.

Intelligent pressure control based on equipment needs: The system automatically adjusts the engine speed according to the actual pressure demands of the back-end drive equipment, so that the compressor is at the maximum air volume at the required pressure point at all times.

Air volume adjustment based on equipment needs: The equipment automatically adjusts the engine speed to match the corresponding air volume to meet air demand during the drilling process.

Smart butler system

Our advantage lies not only in providing complete sets of construction products with excellent quality in the production of machinery and equipment, but also in our technology, in the intelligent services we provide, and in our knowledge and professional experience. They allow us to learn from the leaders and create unique solutions to meet specific needs. It also lies in the unparalleled support provided by our equipment after it is put into use.

- Optimize production efficiency
- Reduce operating costs
- Improve management efficiency

Remote monitoring: The intelligent control system developed by Liugong can be operated remotely as long as there is a 2G signal to check the operating status of the equipment, locate the equipment, remotely lock the car, and unlock it, making it easy to manage all the equipment under its name.

Maintenance reminder: The system provides compressor maintenance time record and maintenance reminder functions to facilitate you to carry out after-sales maintenance management.

International design: In order to meet the needs of international products, the control system can realize the display settings of Chinese, English, Russian, Thai, Portuguese, Spanish, French and other languages.

*Please consult regional sales for details.



MINE AND ROAD CONSTRUCTION SERIES

TECHNICAL PARAMETERS

Model		CSH175A-8	CSH300A-12	CSH350A-10	CSH450A-8	CSH500A-14	CSH560A-8	CSH600A-18	CSH600A-18	CSH660A-20	CSH750A-10	CSH780A-8	CSH900A-10
Compressor	Dual transformation	Single	Single	Single	Single	Single	Single	Single	Single	Single	Single	Single	Single
	Free Air Delivery [m³/min]	5	8	10	12.5	15	16	17	17	18	21	22	25.5
	Free Air Delivery [cfm]	175	300	350	450	500	560	600	600	660	750	780	900
	Pressure[Bar]	8	12	10	8	14	8	18	18	20	10	8	10
	Pressure[psi]	116	174	145	116	203	116	261	261	290	145	116	145
	Compressor oil[L]	10	26	26	26	35	35	35	80	45	80	80	80
	Element	LGIR	LGIR	LGIR	LGIR	LGIR	LGIR	LGIR	LGIR	LGIR	LGIR	LGIR	LGIR
Engine	Supplier	Cummins	Yuchai	Yuchai	Yuchai	Yuchai	Yuchai	Yuchai	Cummins	Yuchai	Cummins	Cummins	Cummins
	Type	HFC4DA1-2C3	YC4A130-H311	YC4A130-H311	YC4A130-H311	YCA05190-T300	YCA05190-T300	YC6J220-T300	6LTAA9.3	YC6A260-H300	6LTAA9.3	6LTAA9.3	6LATAA8.9-C325
	Power[kW]	36.8	96	96	96	140	140	162	162	191	162	162	239
	Working and Idling speed [rpm]	2350/1300	1800/1400	2000/1400	2200/1400	1950/1400	2200/1400	2000/1400	2000/1300	1900/1400	2000/1300	2100/1300	1900/1300
	Number of cylinders	4	4	4	4	4	4	6	6	6	6	6	6
	Displacement [L]	2.8	4.837	4.837	4.837	4.837	4.837	6.494	9.3	7.255	9.3	9.3	8.9
	Emission levels(Standard)	欧IIIA	Stage III	Stage III	Stage III	Stage III	Stage III	Stage III	Stage II	Stage III	Stage II	Stage II	Stage II
Unit	Fuel capacity [L]	70	180	180	180	180	180	340	340	340	340	340	340
	Weight [t]	0.9	2	2	2	2	2	2.7	3	2.8	3	3	3
	outlet×quantity	G¾×3	G1½×1 & G¾×1	G1½×1 & G¾×1	G1½×1 & G¾×1	G1½×1 & G¾×1	G1½×1 & G¾×1	G1½×1 & G¾×1	G1½×1 & G¾×1	G1½×1 & G¾×1	G2×1 & G¾×1	G2×1 & G¾×1	G2×1 & G¾×1
	tire size×quantity	Two tires	Two tires	Two tires	Two tires	Two tires	Two tires	Two tires	Two tires	Four tires	Two tires	Two tires	Two tires
	Overall dimensions [mm]	2590x1436x1461	3326x2000x2113	3326x2000x2113	3326x2000x2113	3326x2000x2113	3326x2000x2113	3897x2120x2247	3897x2120x2247	3787x1601x2226	3897x2120x2247	3897x2120x2247	3897x2120x2247
	Noise[dB(A)]	70±3	80±3	80±3	80±3	82±3	82±3	82±3	83±3	82±3	83±3	83±3	83±3
Options	Skid mounted[without tires]	○	○	○	○	○	○	○	○	○	○	○	○
	Two tires	●	●	●	●	●	●	●	●	●	●	●	●
	Four tires	×	○	○	○	○	○	○	○	○	○	○	○
	Low temperature & start package	○	○	○	○	○	○	○	○	○	○	○	○
	GPS	×	×	○	○	○	○	○	×	○	×	×	×
	Multilingual	○	○	○	○	○	○	○	×	○	×	×	×
	Multiple conditions	×	×	×	×	×	×	×	×	×	×	×	×
	Control system extension	○	○	○	○	○	○	○	○	○	○	○	○

*Optional package remarks: 1.Standard configuration ● 2.Optional ○ 3.Not compatible×

*Only applicable to countries and regions that meet the requirements of emission standards.



ELECTRICAL AIR COMPRESSOR

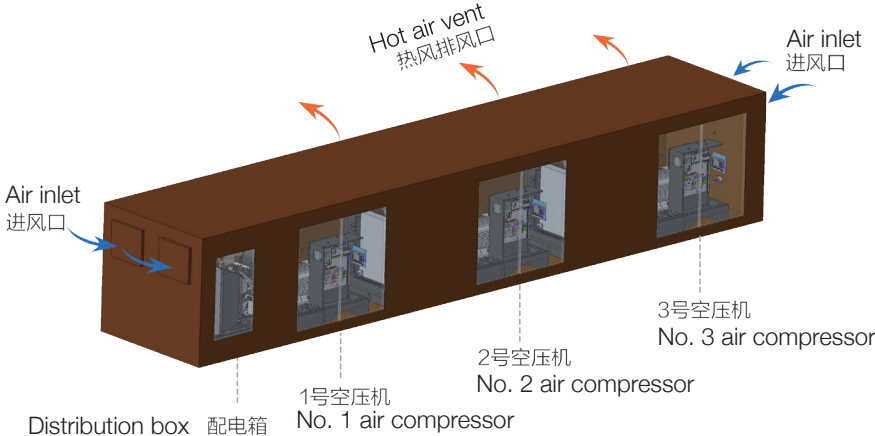
Electrification solution for mining operations

Air compressor is one of the important equipment in mining, you can leverage higher profits with lower investment. Our professional air compressor R&D and sales teams can customize electric air compressor station solutions according to your needs.

- Air compressor station
- Container type air compressor station

Advantage

Intelligent linkage: It can achieve simultaneous linkage control of multiple air compressors, and the linkage control mode can be set according to user needs.
conserve energy ,reduce emissions:
Optional frequency converter, control the motor speed according to the actual gas usage, and intelligently adjust the optimal energy-saving operation plan.
Lower cost: Low usage and maintenance costs, longer service life.
Efficient and convenient: Plug and play container air compressor station, with relatively low overall procurement cost. Only one flat construction site is needed for installation and use, and the entire structure can be suspended
Easy to install and transport, with almost no impact on the environment.
Centralized air supply solution: Multiple air compressors are combined for centralized air supply, and the air ports are then divided to effectively reduce usage costs and improve operational efficiency.



Model		CSH350A-13A	CSH460A-10A	CSH580A-10A	CSH700A-8A	CSH580A-16A	CSH860A-8A
Com- pressor	Free Air Delivery [m³/min]	10	13	16	20	16	24
	Free Air Delivery [cfm]	350	460	580	700	580	860
	Pressure[Bar]	13	10	10	8	16	8
	Pressure[psi]	189	145	145	116	232	116
	Compressor oil[L]	35	35	35	35	35	35
	Element	LGIR	LGIR	LGIR	LGIR	LGIR	LGIR
Motor	Rated Power[kW]	90	90	110	110	132	132
	Rated Speed [rpm]	1490	1490	2980	2980	1490	2980
	Protection/Insulation Grade	IP55/F	IP55/F	IP55/F	IP55/F	IP55/F	IP55/F
	Energy Efficiency Index	IE3	IE3	IE3	IE3	IE3	IE3
Unit	Weight [t]	2.2	2.2	2.2	2.2	2.2	2.2
	Outlet×Quantity	G1½×1 & G¾×1	G1½×1 & G¾×1	G1½×1 & G¾×1	G1½×1 & G¾×1	G1½×1 & G¾×1	G1½×1 & G¾×1
	Tire Size×Quantity	Skid mounted	Skid mounted	Skid mounted	Skid mounted	Skid mounted	Skid mounted
	Overall dimensions [mm]	2980x1600x1900	2980x1600x1900	2980x1600x1900	2980x1600x1900	2980x1600x1900	2980x1600x1900
	Noise[dB(A)]	75±3	75±3	75±3	75±3	75±3	75±3
Options	Trailer	○	○	○	○	○	○
	Skid mounted	●	●	●	●	●	●
	Frequency conversion control	○	○	○	○	○	○
	Soft Start	○	○	○	○	○	○

Model		CSH660A-20A	CSH750A-14A	CSH750A-21A	CSH860A-14A	CSH1000A-17A	CSH920A-21A	CSH1080A-24A
Com- pressor	Free Air Delivery [m³/min]	18	21	21	24	28	26	30
	Free Air Delivery [cfm]	660	750	750	860	1000	920	1080
	Pressure[Bar]	20	14	21	14	17	21	24
	Pressure[psi]	290	203	305	203	247	305	348
	Compressor oil[L]	90	90	90	90	90	90	110
Motor	Element	LGIR	LGIR	LGIR	LGIR	LGIR	LGIR	LGIR
	Rated Power[kW]	160	160	180	180	200	200	250
	Rated Speed [rpm]	1490	2980	1490	2980	1490	1490	2980
	Protection/Insulation Grade	IP55/F	IP55/F	IP55/F	IP55/F	IP55/F	IP55/F	IP55/F
	Energy Efficiency Index	IE3	IE3	IE3	IE3	IE3	IE3	IE3
Unit	Weight [t]	2.8	2.8	2.8	2.8	3	3	4.5
	Outlet×Quantity	G2×1 & G¾×1	G2×1 & G¾×1	G2×1 & G¾×1	G2×1 & G¾×1	G2×1 & G¾×1	G2×1 & G¾×1	G2×1 & G¾×1
	Tire Size×Quantity	Skid mounted	Skid mounted	Skid mounted	Skid mounted	Skid mounted	Skid mounted	Skid mounted
	Overall dimensions [mm]	3200x1800x2100	3200x1800x2100	3200x1800x2100	3200x1800x2100	3200x1800x2100	3200x1800x2100	3800x1800x2300
	Noise[dB(A)]	76±3	76±3	76±3	76±3	78±6	78±6	80±3
Options	Trailer	○	○	○	○	○	○	○
	Skid mounted	●	●	●	●	●	●	●
	Frequency conversion control	○	○	○	○	○	○	○
	Soft Start	○	○	○	○	○	○	○

PHOTOVOLTAIC PUNCHING SERIES

Model		CSH780A-21	CSH860A-21		CSH1100A-25	
Compressor	Dual transformation	Single	Condition 1	Condition 2	Condition 1	Condition 2
	Free Air Delivery [m³/min]	22	24	18	26-22	31-25
	Free Air Delivery [cfm]	780	860	660	930-780	1100-900
	Pressure[Bar]	21	21	21	16-22	16-25
	Pressure[psi]	305	305	305	232-319	232-363
	Compressor oil[L]	80	80		110	
Engine	Element	LGIR	LGIR		LGIR	
	Supplier	Cummins	Cummins		Cummins	
	Type	6LATAA8.9-C325	B7-T3		L9PLUST3	
	Power[kW]	239	221		294	
	Working and Idling speed [rpm]	1900/1300	2000/1300 1600/1300		1830/1400 1930/1400	
	Number of cylinders	6	6		6	
Unit	Displacement [L]	8.9	6.79		8.9	
	Emission levels(Standard)	国 II	国 III		国 III	
	Fuel capacity [L]	340	340		650	
	Weight [t]	3	3.2		4	
	outlet×quantity	G2×1 & G¾×1	G2×1 & G¾×1		G2×1 & G¾×1	
	tire size×quantity	Two tires	Four tires		Skid mounted	
Options	Overall dimensions [mm]	3897x2120x2247	3787x1601x2226		3234x1993x2133	
	Noise[dB(A)]	83±3	83±3		83±3	
	Skid mounted[without tires]	○	○		●	
	Two tires	●	○		×	
	Four tires	○	●		○	
	Low temperature & start package	○	○		○	
	GPS	×	○		○	
	Multilingual	×	○		○	
	Multiple conditions	×	×		○	
	Control system extension	○	○		○	

*Optional package remarks: 1.Standard configuration ● 2.Optional ○ 3.Not compatible×

*Only applicable to countries and regions that meet the requirements of emission standards.

CHANNEL DREDGING SERIES

TECHNICAL PARAMETERS

型号		CSH1180A-31	
Compressor	Dual transformation	Condition 1	Condition 2
	Free Air Delivery [m³/min]	29-25	31.5-26
	Free Air Delivery [cfm]	1030-900	1180-920
	Pressure[Bar]	18-25	18-31
	Pressure[psi]	261-363	261-450
	Compressor oil[L]	110	
Engine	Element	LGIR	
	Supplier	Yuchai	
	Type	YC6MK410L-C20	
	Power[kW]	300	
	Working and Idling speed [rpm]	1750/1400 1900/1400	
	Number of cylinders	6	
Unit	Displacement [L]	10.3	
	Emission levels(Standard)	Stage II	
	Fuel capacity [L]	700	
	Weight [t]	5	
	outlet×quantity	G2×1 & G¾×1	
	tire size×quantity	Skid mounted	
Options	Overall dimensions [mm]	3786x1832x2142	
	Noise[dB(A)]	83±3	
	Skid mounted[without tires]	●	
	Two tires	×	
	Four tires	○	
	Low temperature & start package	○	
	GPS	○	
	Multilingual	○	
	Multiple conditions	○	
	Control system extension	○	



WELL / OIL AND GAS FIELD / PILE FOUNDATION / GEO-THERMAL ENERGY / BRIDGE CONSTUCTION SERIES

TECHNICAL
PARAMETERS

Model		CSH1100A-25		CSH1120A-31		CSH1300A-34		CSH1320A-35		CSH1320A-35		CSH1450A-35		CSH1600A-35		CSH1620A-40		CSH1620A-40		CSH1650A-25	
Compressor	Dual transformation	Cond 1	Cond 2	Cond 1	Cond 2	Cond 1	Cond 2	Cond 1	Cond 2	Cond 1	Cond 2	Cond 1	Cond 2	Cond 1	Cond 2	Cond 1	Cond 2	Cond 1	Cond 2	Cond 1	Cond 2
	Free Air Delivery [m³/min]	26-22	31-25	29-25	31.5-26	31-29	36-32	31-29	36.5-32	31-29	36.5-32	41-39	41-35	45-42	45-39	42-40	45.5-38	42-40	45.5-38	41-39	46.5-35
	Free Air Delivery [cfm]	930-780	1100-900	1030-900	1120-920	1100-1030	1300-1150	1100-1030	1320-1150	1100-1030	1320-1150	1450-1380	1450-1250	1600-1500	1600-1380	1500-1420	1620-1350	1500-1420	1620-1350	1450-1420	1650-1500
	Pressure[Bar]	16-22	16-25	18-25	18-31	21-25	21-34	21-25	21-35	21-25	21-35	21-25	21-35	21-25	21-35	15-20	15-40	15-20	15-40	16-20	16-25
	Pressure[psi]	232-319	232-363	261-363	261-450	305-363	305-493	305-363	305-508	305-363	305-508	305-363	305-508	305-363	305-508	218-290	218-580	218-290	218-580	232-290	232-363
	Compressor oil[L]	110		110		120		120		120		160		165		165		165		165	
	Element	LGIR		LGIR		LGIR		LGIR		LGIR		Sullivan		Sullivan		IR		Sullivan		LGIR	
Engine	Supplier	Cummins		Yuchai		Yuchai		Cummins		Yuchai		Yuchai		Volvo		Volvo		Yuchai		Yuchai	
	Type	L9PLUST3		YC6MK400-H300		YC6K560-KT31		QSZ13-C550		YCK16775-T300		YCK16775-T300		TAD1643VE		TAD1643VE		YC6TD800-T301		YCK16775-T300	
	Power[kW]	294		295		412		410		570		570		565		565		588		570	
	Working and Idling speed [rpm]	1830/1400	1930/1400	1750/1400	1900/1400	1600/1300	1830/1300	1600/1400	1830/1400	1600/1300	1830/1300	1800/1300		1780/1300		1850/1300		1850/1300		1850/1300	
	Number of cylinders	6		6		6		6		6		6		6		6		6		6	
	Displacement [L]	8.9		10.3		13		13		15.93		15.93		16		16		19.6		15.93	
	Emission levels(Standard)	Stage III		Stage III		Stage III		Stage III		Stage III		Stage III		Stage III		Stage III		Stage III		Stage III	
Unit	Fuel capacity [L]	650		650		700		700		700		1100		1100		1100		1100		1100	
	Weight [t]	4		4.2		5.5		5.6		5.5		6.4		6.8		6.8		6.8		6.8	
	outlet×quantity	G2×1 & G¾×1		G2×1 & G¾×1		G2×1 & G¾×1		G2×1 & G¾×1		G2×1 & G¾×1		G2×1 & G¾×1		G2×1 & G¾×1		G2×1 & G¾×1		G2×1 & G¾×1		G2×1 & G¾×1	
	tire size×quantity	Skid mounted		Skid mounted		Skid mounted		Skid mounted		Skid mounted		Skid mounted		Skid mounted		Skid mounted		Skid mounted		Skid mounted	
	Overall dimensions [mm]	3797x1832x2129		3786x1832x2142		4118x1832x2114		4118x1832x2114		3980x1832x2114		4443x2200x2540		4443x2200x2540		4443x2200x2540		4443x2200x2540		4443x2200x2540	
	Noise[dB(A)]	83±3		83±3		85±3		85±3		85±3		85±3		85±3		85±3		85±3		85±3	
	Skid mounted[without tires]	●		●		●		●		●		●		●		●		●		●	
Options	Two tires	×		×		×		×		×		×		×		×		×		×	
	Four tires	○		○		○		○		○		○		○		○		○		○	
	Low temperature & start package	○		○		○		○		○		○		○		○		○		○	
	GPS	○		○		○		○		○		○		○		○		○		○	
	Multilingual	○		○		○		○		○		○		○		○		○		○	
	Multiple conditions	○		○		○		○		○		○		○		○		○		○	
	Control system extension	○		○		○		○		○		○		○		○		○		○	

*Optional package remarks: 1.Standard configuration ● 2.Optional ○ 3.Not compatible×
*Only applicable to countries and regions that meet the requirements of emission standards.



Down-The-Hole DRILLING RIG

TECHNICAL PARAMETERS

Model		DH45A-H	DH47A-H	DH612A-H	DH845A	DH947A-A
Structure	Type	seperated	seperated	seperated	integrated	integrated
	Cab	×	×	×	×	√
Borehole Data	Hole sizes[mm]	90-120	90-185	180-300	90-140	90-152
	Hammer Size	3"/4"	3"/4"/5"/6"	6"/8"/10"/12"	3"/3.5"/4"	3.5"/4"/5"
	Hole Depth[m]	30	30	4	30	24
	Diameter[mm]	64/76	64/76/89	89/102/114	76	76
Pipe Sizes	Length[mm]	3000	3000	3000	3000	3000
	Brand	Yuchai	Yuchai	Yuchai	Cummins	Yuchai
Diesel	Model	YC4FA85-T300	YC4A100-T302	YC4DK100-T304	L9	YCA6L310-H301
	Rated Power[kW]	62.5	73.5	73.5	190	230
Compressor	Brand	/	/	/	LGIR	Sullivan-palatek
	FAD[m³/min]	/	/	/	12 14.5	19
	Pressure[bar]	/	/	/	18 20	20
	Dual transformation	/	/	/	双工况	
Feed	Length[mm]	5060	6300	5750	5850	7350
	Stroke[mm]	3200	3750	3650	3860	5210
	compensation[mm]	1260	1260	1200	1000	1000
	Feeding Force[kN]	18	30	20	18	20
	Speed[m/s]	0.6	0.59	0.6	0.83	0.95
Rotation	Torque[N.m]	3000	3680	4000	1640	3400
	Rotational Speed[rpm]	100	70	0-60	0-120	0-120
Moving Parameter	Low Speed[km/h]	3	3	2	1.8	1.5
	High Speed[km/h]	3	3	4	3.3	2.5
	Grad Ability	35°	32°	35°	30°	25
Dust Collector	Filter Area[m³]	/	/	/	15	24
	Filty Qty.[pcs]	/	/	/	15	20
Dimension	Dimension [mm]	6300x2200x2600	6500x2310x2450	7000x2100x2260	8300*2350*3300	9500*2500*3300
	Weight [kg]	5800	6800	7000	10500	13500

TOP HAMMER DRILLING RIG

TECHNICAL PARAMETERS

Model		RD45A-CS
Borehole Data	Hole sizes[mm]	76-127
	Drill rods	T45,T51
	Hole Depth[m]	21
Transport Dimensions	Length[mm]	9200
	Width[mm]	2350
	Height[mm]	3100
	Weight[kg]	12500
Tramming parameters	Track width[mm]	330
	Gradeability[°]	30
	Walking speed[km/h]	4.3/2.8
	Ground clearance[mm]	420
	Track oscillation[°]	±10
Dust collecteor	Motor Speed[rpm]	3300
	Filter Area[m³]	15
Compressor	Maker	Sullivan-Palatek
	FAD[m³/min]	10.5
	Pressure[bar]	10.5
Engine	Maker	Cummins
	Power[kW]	194
	Fuel tank[L]	400
Feed	Stroke[mm]	4420
	Force down[kN]	16
	Force up[kN]	21
Drifter	Drifter	YH-100
	Power[kW]	20.6
	Frequency[Bpm]	2500
Coverage Area	RPM[rpm]	0-150
	Boom lift[°]	55 °Up / 30°Down
	Boom swing[°]	60°Left / 40°Right
	Feed swing[°]	50°Left / 40°Right





Considerate Service, Monumentous Satisfaction

PROFESSIONAL MAINTENANCE SERVICE AND ACCESSORIES SUPPORT

Whether it is procuring Liugong parts or maintenance services, we can customize the scheme based on your needs and provide professional after-sales service support to ensure that your equipment can be maintained. The Liugong Compressor after-sales service team has rich experience and offers a wide range of services. No matter where your compressor and drilling rig was purchased, we can provide you with equipment maintenance or accessory support.

COMMUNICATION IS THE KEY TO SOLVING ALL PROBLEMS

We are committed to keeping you informed about our services and maintenance work and providing you with precise and accurate valuation, invoices, and information in a timely manner. We know that such basic information is often the most concerning for customers.



**Diagnostic equipment
for professional techni-
cal service personnel**



**Various after-sales
service methods and
online support**



**Complete catalogue
spare parts and timely
responsiveness**



**Reasonable and
transparent cost**



**Electronic picture,
clear communication**